



ELSEVIER

Journal of Structural Geology 25 (2003) 2159–2160

**JOURNAL OF
STRUCTURAL
GEOLOGY**

www.elsevier.com/locate/jsg

Discussion

Comment on: “The Bude Formation, SW England—a three-dimensional, intra-formational variscan imbricate stack?” by G.E. Lloyd and N. Chinnery [Journal of Structural Geology 24(2002)1259–1280][☆]

Jack Treagus

Department of Earth Sciences, Manchester University, Manchester M13 9PL, UK

Received 1 November 2002; received in revised form 27 January 2003; accepted 26 February 2003

I welcome the paper by [Lloyd and Chinnery \(2002\)](#), which describes in great detail the structure of the important coastal section at Bude in Cornwall. However, no doubt in common with many of your readers, I would like to revisit the section with the paper in-hand in order to re-examine this controversial site. This I would find frustratingly difficult. We are presented with a cross-section and map (their Fig. 6) that apparently views the structure looking westwards, from the land towards the sea. It is only on close inspection of the cliff-line that it is clear that the diagram has been presented inverted!

The perversity of this view is further brought home by the impossibility of comparing the authors' cross-section with the only other comparable one, that of [Freshney et al. \(1979, Fig. 2\)](#), which is reproduced as Lloyd and Chinnery's Fig. 4. Lloyd and Chinnery invite us to contrast this “potentially seriously flawed” cross-section and its “relatively simple structural style” with their Fig. 6; their criticism of Freshney et al.'s Fig. 2 is partly based on palaeontological evidence, but also on ‘disposition’. Since

Freshney et al. draw on a greatly different scale, the invited comparison cannot be made. I submit here a re-drawing of Lloyd and Chinnery's section at the same scale (and the same way up), as that of Freshney et al., which readers may find more useful ([Fig. 1](#)). The principal difference in the two structural interpretations revealed is clearly in the sheet-dip of the formations in the central section; it will now be instructive to make a comparison of their relative merits in the field.

References

- Freshney, E.C., Edmonds, E.A., Taylor, R.T., Williams, B.J., 1979. Geology of the country around Bude and Bradworthy. Memoirs of the Geological Survey of Great Britain, Sheets 307 and 308
- Lloyd, G.E., Chinnery, N., 2002. The Bude Formation, SW England—a three-dimensional, intra-formational Variscan imbricate stack? Journal of Structural Geology 24, 1259–1280.

E-mail address: Jack.Treagus@btinternet.com (J. Treagus).

[☆] PII of original article S0191-8141(01)00130-4.

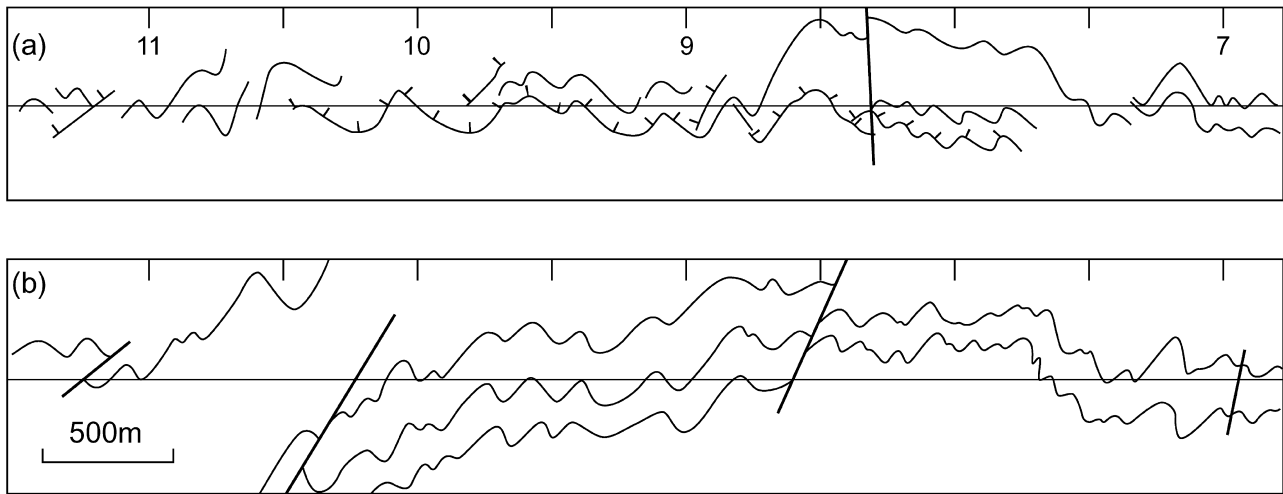


Fig. 1. A comparison of the cross-sections of the Bude coastal section. (a) Redrawn from [Lloyd and Chinnery \(2002, Fig. 6\)](#); thrusts ornamented; (b) redrawn from [Lloyd and Chinnery \(2002, Fig. 4\)](#) (after [Freshney et al., 1979, Fig. 2](#)). Individual formations in the two sections are not generally comparable.